



REAL OPTIC



KPW-1012-D

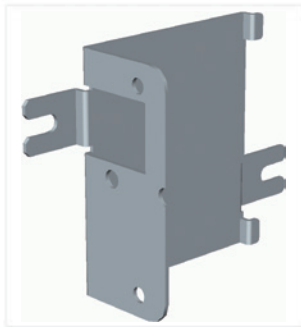


DIN-Rail AC-DC 12V/10W Power Supply

DIN-Rail Mounting



Panel Mounting Bracket



Accessories



Principales características:

- Entrada de CA universal/rango completo
- Típico enchufe de CA IEC320 para instalación universal
- Doble tipos de interfaces de salida de CC:
 - Un conector de bloque de terminales industrial para instalaciones industriales
 - Soporte de enchufe de CC típico para instalación universal
- Consumo de energía sin carga < 0.3W
- Protecciones: Cortocircuito/Sobrecarga/Sobretensión
- Módulo de alimentación interno aprobado por seguridad UL60601-1/IEC60601-1/UL60950-1/IEC609501-1
- Certificado TUV EN60950-1
- Amplio rango de temperatura de operación

Specifications:

AC Input voltage	100 ~ 240VAC
DC Output voltage	+12V (+/-1%), 0.85A max.
Output Rated Power	10.2W
Efficiency	83% (Typ.)
Input connectors	IEC320 C14 socket
Output connectors	Terminal block 2P: Vout+/Vout- DC plug cable for Device's DC jack interface
LED	Power status
Mounting Support	DIN-Rail, Wall, Panel, Desktop
Protection	Short circuit, Over load, Over voltage
Environment	Operating Temperature: -40°C ~ 70°C Storage Temperature: -40°C ~ 85°C Relative Humidity: 10% ~ 90% non-condensing
Dimensions	32 x 51 x 95 mm (WxDxH)
Internal Power Module	UL60601-1, IEC60601-1, UL60950-1, IEC60950-1, certification
MTBF	136K Hours
Approval	FCC Class A, CE mark Class A LVD, TUV EN60950-1 safety, VCCI Class A NEMA TS2-2003 Environment tested

180801

Importado y Distribuido por Real Optic Limitada

Avenida Ventisquero #1204 Modulo 18 - Renca, Chile - ventas@realoptic.com - www.realoptic.com -WP:+56996374501

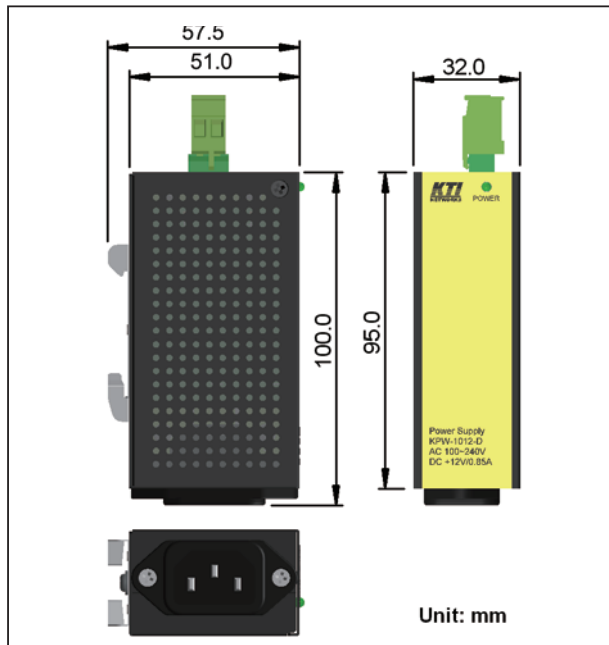


REAL OPTIC

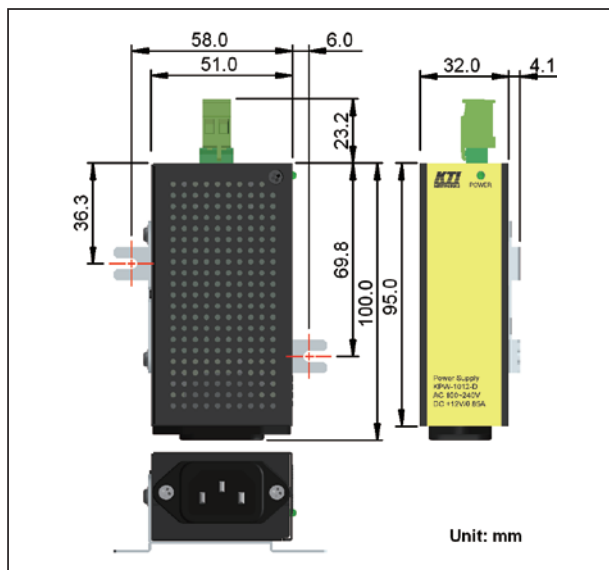


EMI EMS Safety Environmental Tests:

Test	Standard	Specifications
FCC/EMI	FCC Rule Part 15	Class A
CE/EMC/EMI	EN55022, CISPR 22	Class A
VCCI	VCCI V-3 VCCI V-4	Class A
CE/EMC/Harmonic	EN 61000-3-2	< 75 W
CE/EMC/FFF	EN 61000-3-3	Clause 5
CE/EMC/EMS	EN 55024	
ESD Test	IEC 61000-4-2	Contact: 4k Air: 8k
RS Test	IEC 61000-4-3	Strength: 3V/m
EFT/BURST	IEC 61000-4-4	Line-Line: 1k Line-Ground: 1k
Surge Immunity	IEC 61000-4-5	Line-Line: 1k Line-Ground: 2k
CS Test	IEC 61000-4-6	Level 2
Magnetic Field Imm.	IEC 61000-4-8	50Hz 1A/m
Voltage Dips Imm.	IEC 61000-4-11	Interrupt 95%: C Dips 95%: B
Safety	TUV 60950-1	
Dielectric Voltage	IEEE 802.3	TP, 1500VAC/10mA
Insulation Resistance	IEEE 802.3	TP, 500VDC/10Mohm
Cold Test	IEC 60068-2-1 Ad	-40°C, 24hrs
Dry Heat Test	IEC 60068-2-2 Bd	+70°C, 40%RH, 72hrs
Damp Heat Test	IEC 60068-2-3 Ca	+70°C, 90%RH, 72hrs
NEMA TS2 Vibration test	NEMA TS2-2003 Proc. 2.2.8	5-30Hz, 0.5g XYZ, 1hr/axis
NEMA TS2 Shock test	NEMA TS2-2003 Proc. 2.2.9	10G
NEMA TS2 Environment test	NEMA TS2-2003 Proc. 2.2.7	Temp: -34°C ~ 74°C Humid: 0%~90%



DIN-Rail Dimension



Panel Dimension

