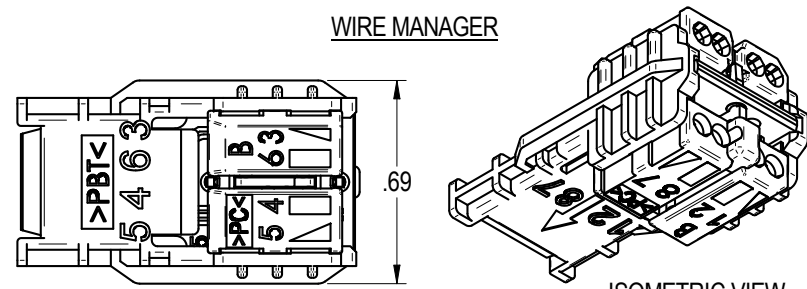
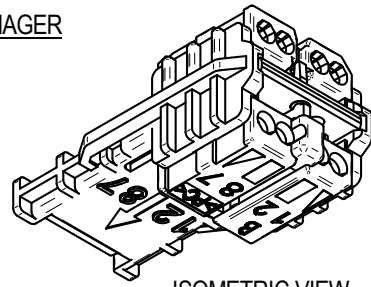


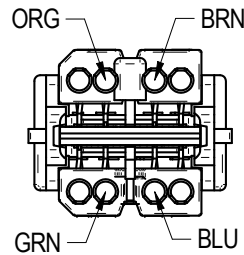
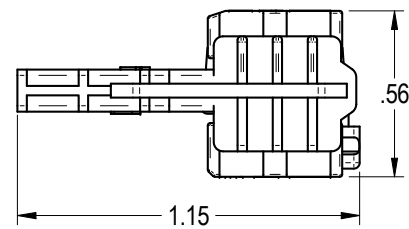
"OPTICAL CABLE CORPORATION (OCC)
RESERVES THE RIGHT TO REVISE ANY
AND ALL DESIGN SPECIFICATIONS."
UNCONTROLLED COPY



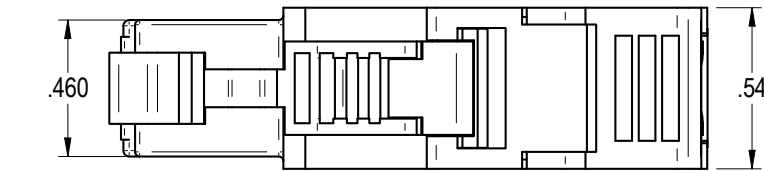
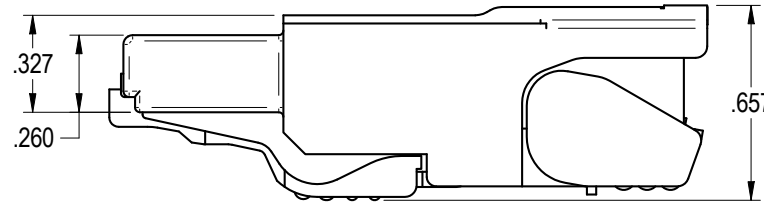
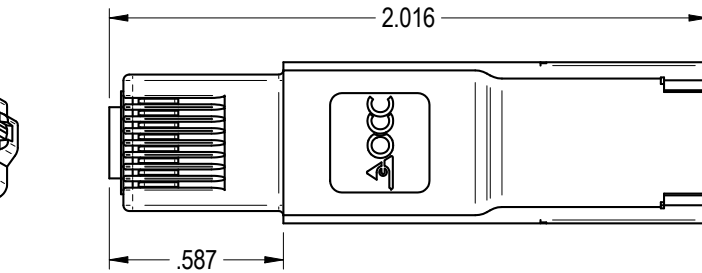
WIRE MANAGER



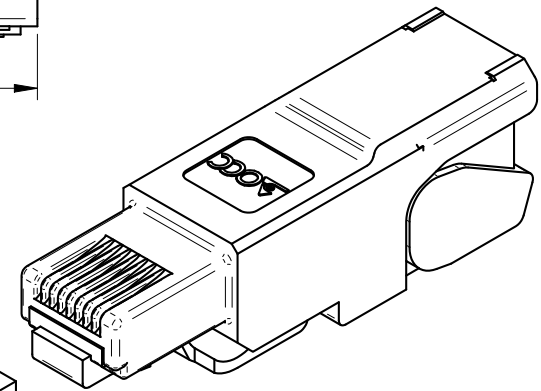
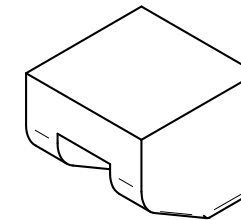
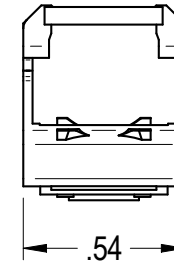
ISOMETRIC VIEW



PIN ASSIGNMENT T568B
ACCORDING TO TIA 568-C.2



EXTERNAL HOUSING



ISOMETRIC VIEW

DUST CAP

NOTES: UNLESS OTHERWISE SPECIFIED.

1. PRODUCT APPROVAL REQUIRES CERTIFICATION OF COMPLIANCE TO E.U. RoHS DIRECTIVE 2002/95/EC

2. PERFORMANCE CHARACTERISTICS:

- CATEGORY 6A: ISO/IEC 11801:2010 COMPLIANT
- CATEGORY 6A: ANSI/TIA-568-C.2
- PLUG: IEC 60603-7-41
- LIFE: ≥ 750 MATING CYCLES
- CONTACT FINISH MATERIAL: HARD Au OVER Ni
- SHIELDING HOUSING MATERIAL: DIE-CAST NICKEL-PLATED ZINC
- COPPER CONDUCTOR GAUGE: SOLID: 24 - 22 AWG
STRANDED: 22/7 - 27/7 AWG
- COPPER CONDUCTOR INSULATION DIAMETER: .0039" - .063"
- OVERALL CABLE JACKET DIAMETER: .196" - .354"
- IDC LIFE: £ 4 CYCLES
- TEMPERATURE RANGE: -40°C - 85°C
- POWER OVER ETHERNET PLUS (PoE+) IN ACCORDANCE WITH IEEE 802.3at
- UL 1863 COMMUNICATIONS-CIRCUIT ACCESSORIES
- UL 2043 CERTIFICATION FOR USE IN AIR HANDLING SPACES

UNLESS OTHERWISE SPECIFIED
DIMENSIONS ARE IN INCHES.
TOLERANCES: FRACTIONS ±1/32"
ANGLES ±1/2°
3 PLACE DECIMALS ±.005"
2 PLACE DECIMALS ±.01"

THIRD ANGLE PROJECTION	
CRITICAL DIMENSION CODE	(F) = FUNCTION (M) = MATING (A) = AUDIT

MATERIAL	SEE NOTES
FINISH	SEE NOTES

OCCSFP6A	PLUG, CAT6A, T568B, STP, FIELD TERMINABLE
OCC PART NO.	DESCRIPTION
THIS DRAWING AND THE DESIGN SHOWN ARE THE PROPERTY OF OPTICAL CABLE CORPORATION AND MAY NOT BE USED AS THE BASIS FOR MANUFACTURE OR SALE WITHOUT SPECIFIC WRITTEN PERMISSION OF OPTICAL CABLE CORPORATION.	
DRAWN D.A.HOLBERT	DATE 7/14/14
CHECKED S.PORACH	DATE 7/24/14
ENGINEER J.YANIK	DATE 7/14/14
APPROVED J.CALLOWAY	DATE 8/31/18
PREVIOUS DWG	
NEXT DWG	FILENAME C111940A.dft
DWG TITLE PLUG, CAT 6A, T568B, STP, FIELD TERMINABLE, OCC	
SIZE B	DWG NO. C111940
SCALE: NONE	SHEET 1 OF 1
REV A	