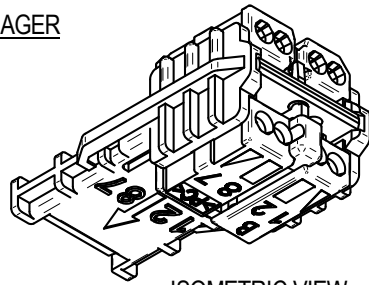
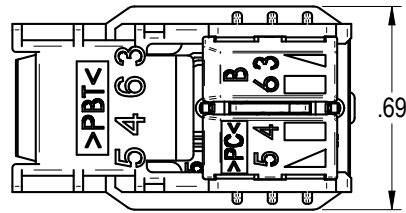
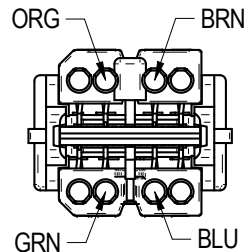
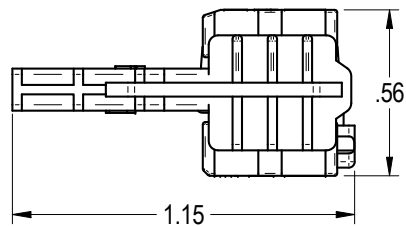


WIRE MANAGER



ISOMETRIC VIEW



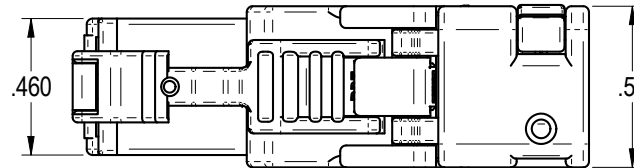
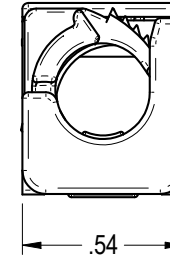
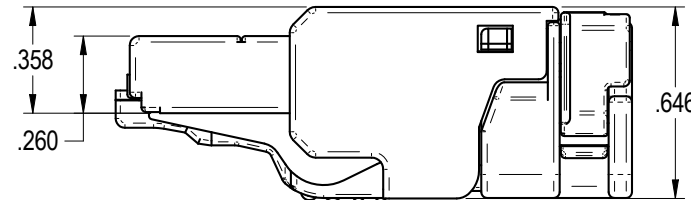
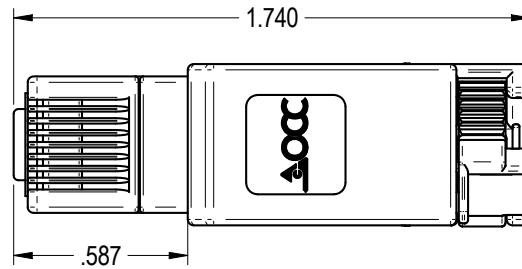
PIN ASSIGNMENT T568B
ACCORDING TO TIA 568-C.2

NOTES: UNLESS OTHERWISE SPECIFIED.

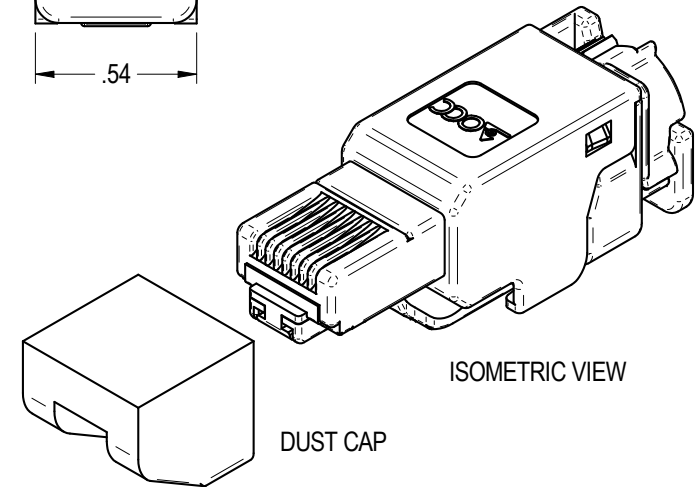
1. PRODUCT APPROVAL REQUIRES CERTIFICATION OF COMPLIANCE TO E.U. RoHS DIRECTIVE 2002/95/EC

2. PERFORMANCE CHARACTERISTICS:

- CATEGORY 6A: ISO/IEC 11801:2010
- CATEGORY 6A: ANSI/TIA-568-C.2
- PLUG: IEC 60603-7-41
- LIFE: ≥ 750 MATING CYCLES
- CONTACT FINISH MATERIAL: HARD Au OVER Ni
- HOUSING MATERIAL: BLACK PC UL94-V0
- COPPER CONDUCTOR GAUGE: SOLID: 24 - 22 AWG
STRANDED: 24/7 - 22/7 AWG
- COPPER CONDUCTOR INSULATION DIAMETER: .043" - .063"
- OVERALL CABLE JACKET DIAMETER: .216" - .335"
- IDC TERMINATION CYCLES: ≤ 4 CYCLES
- TEMPERATURE RANGE: -40°C - 70°C
- POWER OVER ETHERNET PLUS (PoE+) IN ACCORDANCE WITH IEEE 802.3at
- UL 1863 COMMUNICATIONS-CIRCUIT ACCESSORIES
- UL 2043 CERTIFICATION FOR USE IN AIR HANDLING SPACES



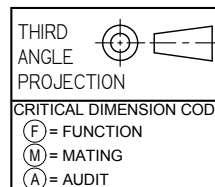
EXTERNAL HOUSING



ISOMETRIC VIEW

DUST CAP

"OPTICAL CABLE CORPORATION (OCC)
RESERVES THE RIGHT TO REVISE ANY
AND ALL DESIGN SPECIFICATIONS."
UNCONTROLLED COPY



UNLESS OTHERWISE SPECIFIED
DIMENSIONS ARE IN INCHES.
TOLERANCES: FRACTIONS ±1/32"
ANGLES ±1/2°
3 PLACE DECIMALS ±.005"
2 PLACE DECIMALS ±.01"

MATERIAL
SEE NOTES

FINISH
SEE NOTES

OCCUFP6A		PLUG, CAT6A, T568B, UTP, FIELD TERMINABLE	
OCC PART NO.		DESCRIPTION	
THIS DRAWING AND THE DESIGN SHOWN ARE THE PROPERTY OF OPTICAL CABLE CORPORATION AND MAY NOT BE USED AS THE BASIS FOR MANUFACTURE OR SALE WITHOUT SPECIFIC WRITTEN PERMISSION OF OPTICAL CABLE CORPORATION.			
DRAWN	D.A.HOLBERT	DATE	6/11/13
CHECKED	S.PORACH	DATE	10/15/13
ENGINEER	J.YANIK	DATE	6/11/13
APPROVED	J.CALLOWAY	DATE	8/31/18
PREVIOUS DWG			
NEXT DWG			
DWG TITLE		SIZE	REV
PLUG, CAT 6A, T568B, UTP, FIELD TERMINABLE, OCC		B	A
DWG NO.		SCALE:	SHEET
C111579		NONE	1 OF 1
FILENAME		C111579A.dft	

