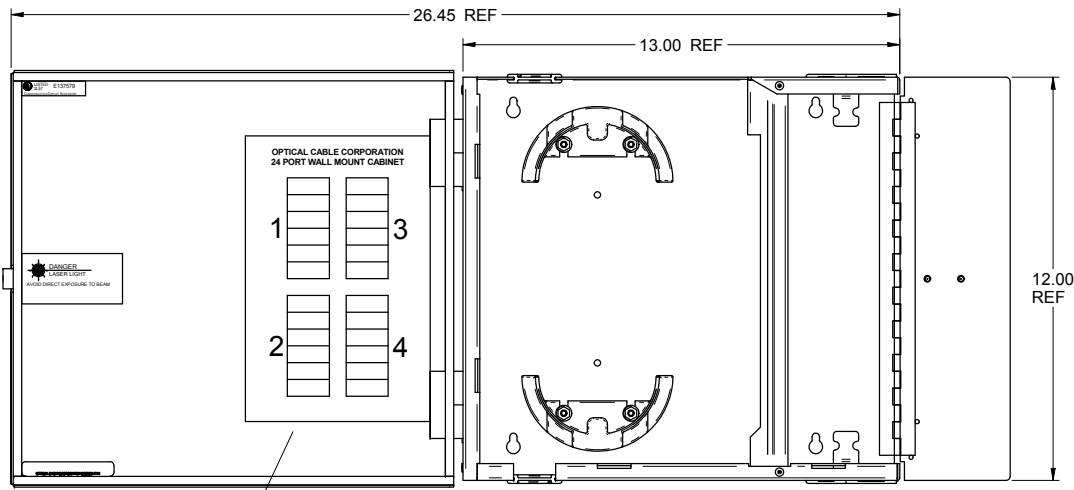
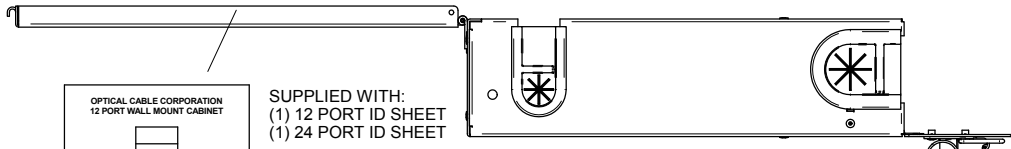


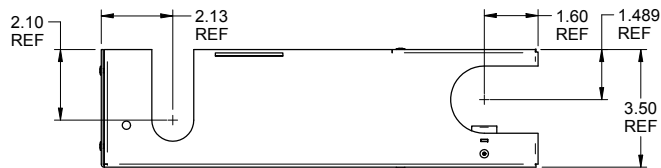
"OPTICAL CABLE CORPORATION (OCC)
RESERVES THE RIGHT TO REVISE ANY
AND ALL DESIGN SPECIFICATIONS."



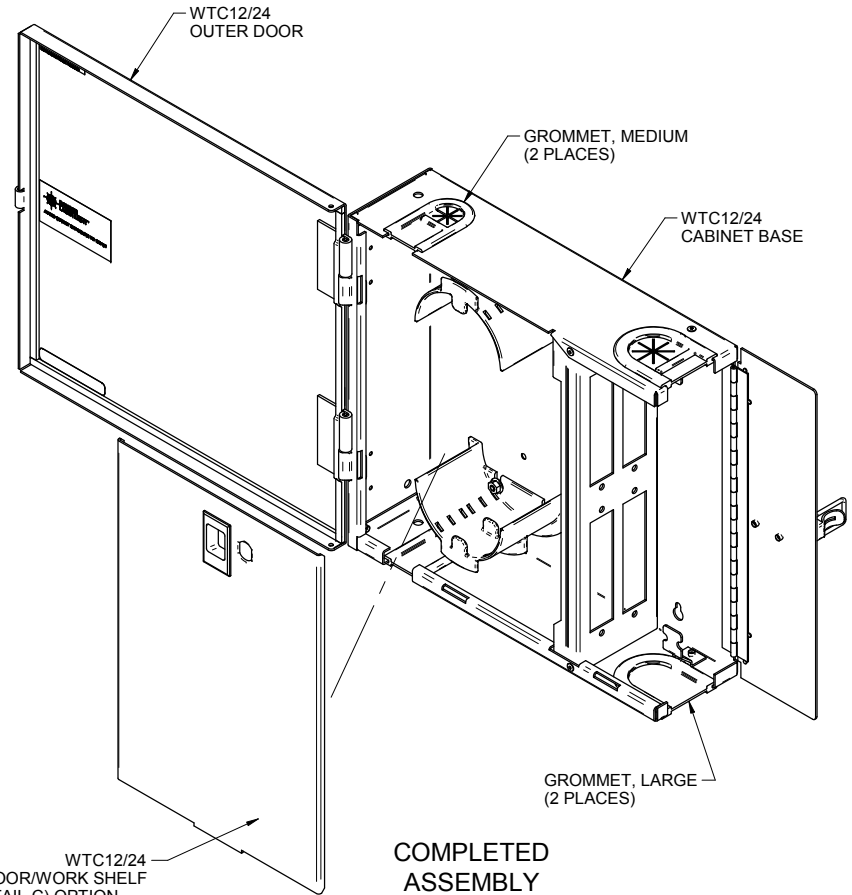
FRONT VIEW



BOTTOM VIEW
(SEE DETAIL B)



DETAIL "B"

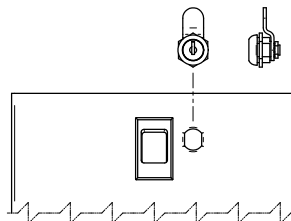


COMPLETED
ASSEMBLY
OPENED VIEW

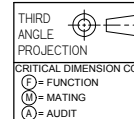
SPECIFICATIONS

FEATURES & BENEFITS:

- OPTICAL CABLE CORPORATION (WTC SERIES) WTC12/24 WALL MOUNT FIBER OPTIC CROSS CONNECT CABINETS PROVIDE FIBER MANAGEMENT, CONNECTIVITY AND DISTRIBUTION FOR 6 TO 48 FIBERS. WTC12/24 ACCOMMODATES ALL CROSS CONNECT FUNCTIONS (SPlicing, TERMINATION, AND INTERCONNECTION) FOR OUTSIDE PLANT, BACKBONE, AND BUILDING CABLES.
- WTC12/24 CABINETS CAN BE ORDERED EMPTY, LOADED, OR CUSTOM CONFIGURED TO YOUR PARTICULAR SPECIFICATIONS. ACCOMMODATES 600 SERIES ADAPTER PLATES.
- INNOVATIVE FIBER MANAGEMENT SYSTEM USES TWO TIER FIBER STORAGE HOOPS DESIGNED TO MAINTAIN ORDERLY FIBER MANAGEMENT. INTEGRAL STRAIN RELIEF BARS AND FLEXIBLE GROMMETS PROVIDE RELIABLE CABLE PROTECTION AT ALL CABLE ENTRANCES AND EXITS.
- RUGGED 16-GAUGE STEEL CONSTRUCTION WITH A DURABLE POWDER COAT FINISH. WTC12/24 CABINET COLOR: A = ALMOND AND B = BLACK
- HINGED OUTER DOOR PROVIDE LOCKABLE LATCH EXTERIOR WITH EASY FRONT ACCESS. REMOVABLE INNER DOOR/WORK SHELF USED AS A WORK PLATFORM DURING INSTALLATION AND MAINTENANCE. (LOCKING OPTION AVAILABLE)
- ALL PLASTIC COMPONENTS ARE HIGH IMPACT SELF-EXTINGUISHING, UL LISTED RATING 94V-0
- WTC12/24 CABINETS ARE DESIGNED TO MEET NEMA 12



DETAIL "C"
INNER DOOR/WORK SHELF
LOCKABLE DOOR LATCH
(OPTIONAL)



UNLESS OTHERWISE SPECIFIED DIMENSIONS ARE IN INCHES.
TOLERANCES: FRACTIONS ±1/32
ANGLES ±1/2°
3 PLACE DECIMALS ±.005"
2 PLACE DECIMALS ±.01"

MATERIAL: SEE BILL OF MATERIAL

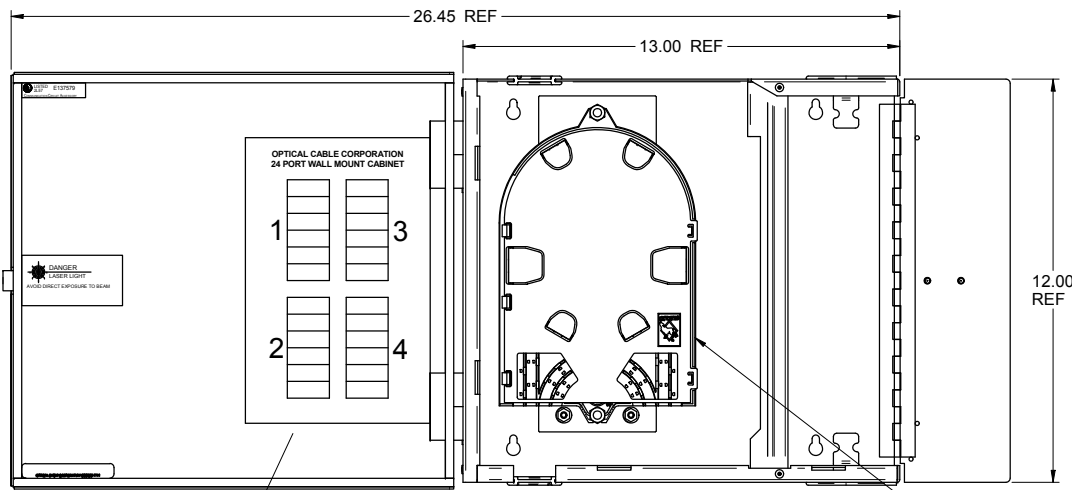
FINISH: SEE NOTES

WTC12/24BL	CABINET ASSY, WALL MNT, 12/24P, W/LOCK, BLACK, OCC
WTC12/24AL	CABINET ASSY, WALL MNT, 12/24P, W/LOCK, ALMOND, OCC
WTC12/24B	CABINET ASSY, WALL MNT, 12/24PORT, BLACK, OCC
WTC12/24A	CABINET ASSY, WALL MNT, 12/24PORT, ALMOND, OCC
OCC PART NO.	DESCRIPTION

<p>THIS DRAWING AND THE DESIGN SHOWN ARE THE PROPERTY OF OPTICAL CABLE CORPORATION AND MAY NOT BE USED AS THE BASIS FOR MANUFACTURE OR SALE WITHOUT SPECIFIC WRITTEN PERMISSION OF OPTICAL CABLE CORPORATION.</p>	
DRAWN: D.A.HOLBERT	DATE: 9/8/06
CHECKED: J.HOWE	DATE: 10/31/06
ENGINEER: J.YANIK	DATE: 9/8/06
APPROVED: D.INGLE	DATE: 2/21/18
PREVIOUS DWG	
NEXT DWG	

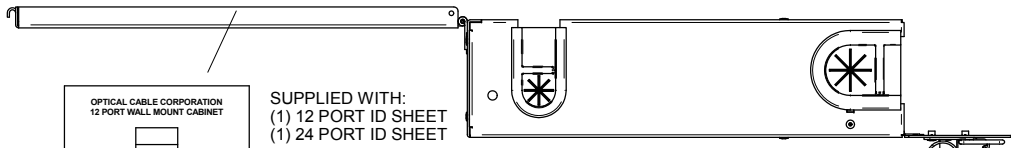
<p>OCC OPTICAL CABLE CORPORATION</p>		<p>REAL OPTIC</p>
<p>DWG TITLE: ASSEMBLY, CABINET, OCC, WALL MOUNT, 12/24 PORT</p>		
SIZE: C	DWG NO. C107638	REV: H
SCALE: NONE	SHEET: 1 OF 2	

"OPTICAL CABLE CORPORATION (OCC)
RESERVES THE RIGHT TO REVISE ANY
AND ALL DESIGN SPECIFICATIONS."
UNCONTROLLED COPY



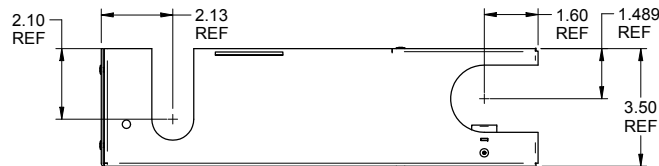
FRONT VIEW

(1) SPLICE TRAY, PUP STYLE
(FOR UP TO 24 FIBER)

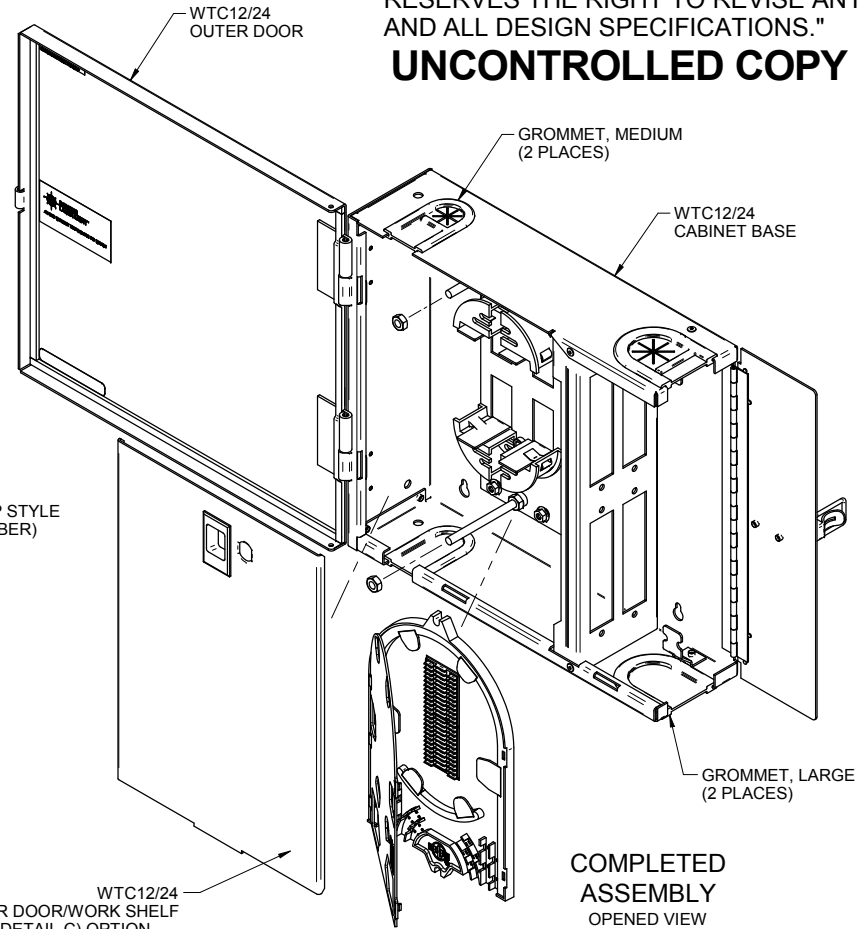


BOTTOM VIEW
(SEE DETAIL B)

SUPPLIED WITH:
(1) 12 PORT ID SHEET
(1) 24 PORT ID SHEET



DETAIL "B"



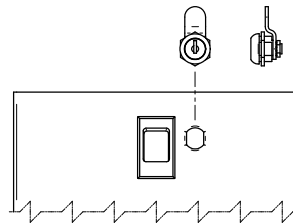
WTC12/24
INNER DOOR/WORK SHELF
(SEE DETAIL C) OPTION

COMPLETED
ASSEMBLY
OPENED VIEW

SPECIFICATIONS

FEATURES & BENEFITS:

- OPTICAL CABLE CORPORATION (WTC SERIES) WTC12/24 WALL MOUNT FIBER OPTIC CROSS CONNECT CABINETS PROVIDE FIBER MANAGEMENT, CONNECTIVITY AND DISTRIBUTION FOR 6 TO 48 FIBERS. WTC12/24 ACCOMMODATES ALL CROSS CONNECT FUNCTIONS (SPlicing, TERMINATION, AND INTERCONNECTION) FOR OUTSIDE PLANT, BACKBONE, AND BUILDING CABLES.
- WTC12/24 CABINETS CAN BE ORDERED EMPTY, LOADED, OR CUSTOM CONFIGURED TO YOUR PARTICULAR SPECIFICATIONS. ACCOMMODATES 600 SERIES ADAPTER PLATES.
- INNOVATIVE FIBER MANAGEMENT SYSTEM USES TWO TIER FIBER STORAGE HOOPS DESIGNED TO MAINTAIN ORDERLY FIBER MANAGEMENT. INTEGRAL STRAIN RELIEF BARS AND FLEXIBLE GROMMETS PROVIDE RELIABLE CABLE PROTECTION AT ALL CABLE ENTRANCES AND EXITS.
- RUGGED 16-GAUGE STEEL CONSTRUCTION WITH A DURABLE POWDER COAT FINISH. WTC12/24 CABINET COLOR: A = ALMOND AND B = BLACK
- HINGED OUTER DOOR PROVIDE LOCKABLE LATCH EXTERIOR WITH EASY FRONT ACCESS. REMOVABLE INNER DOOR/WORK SHELF USED AS A WORK PLATFORM DURING INSTALLATION AND MAINTENANCE. (LOCKING OPTION AVAILABLE)
- ALL PLASTIC COMPONENTS ARE HIGH IMPACT SELF-EXTINGUISHING, UL LISTED RATING 94V-0
- WTC12/24 CABINETS ARE DESIGNED TO MEET NEMA 12



DETAIL "C"
INNER DOOR/WORK SHELF
LOCKABLE DOOR LATCH
(OPTIONAL)

WTC12/24BL-PT2	CABINET ASSY, WALL MNT, 12/24P, PUP 2-TRAYS & LOCK, BLACK, OCC
WTC12/24AL-PT2	CABINET ASSY, WALL MNT, 12/24P, PUP 2-TRAYS & LOCK, ALMOND, OCC
WTC12/24BL-PT	CABINET ASSY, WALL MNT, 12/24P, PUP 1-TRAY & LOCK, BLACK, OCC
WTC12/24AL-PT	CABINET ASSY, WALL MNT, 12/24P, PUP 1-TRAY & LOCK, ALMOND, OCC
WTC12/24B-PT2	CABINET ASSY, WALL MNT, 12/24P, PUP 2-TRAYS, BLACK, OCC
WTC12/24A-PT2	CABINET ASSY, WALL MNT, 12/24P, PUP 2-TRAYS, ALMOND, OCC
WTC12/24B-PT	CABINET ASSY, WALL MNT, 12/24P, PUP 1-TRAY, BLACK, OCC
WTC12/24A-PT	CABINET ASSY, WALL MNT, 12/24P, PUP 1-TRAY, ALMOND, OCC
OCC PART NO.	DESCRIPTION

UNLESS OTHERWISE SPECIFIED, THIS DRAWING AND THE DESIGN SHOWN ARE THE PROPERTY OF OPTICAL CABLE CORPORATION AND TOLERANCES: FRACTIONS ±1/32" ANGLES ±1/2° 3 PLACE DECIMALS ±.005" 2 PLACE DECIMALS ±.01"

MATERIAL	SEE BILL OF MATERIAL
FINISH	SEE NOTES
THIRD ANGLE PROJECTION	
CRITICAL DIMENSION CODE	
(F) = FUNCTION	
(M) = MATING	
(A) = AUDIT	

OCC REAL OPTIC

ASSEMBLY, CABINET, OCC, WALL MOUNT, 12/24 PORT

SIZE C DWG NO. **C107638** REV H

SCALE: NONE SHEET 2 OF 2