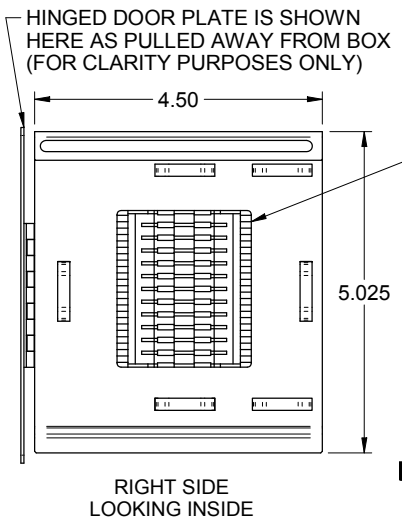
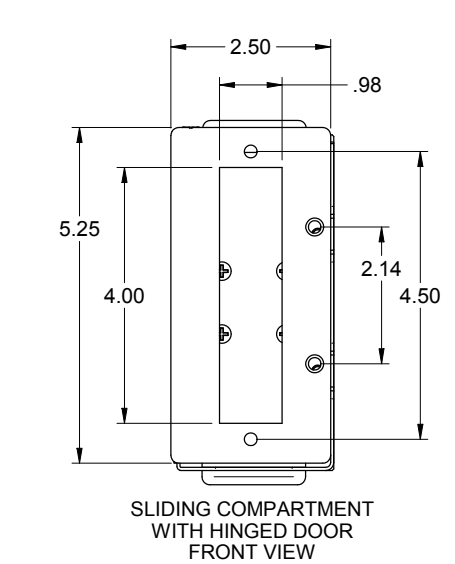
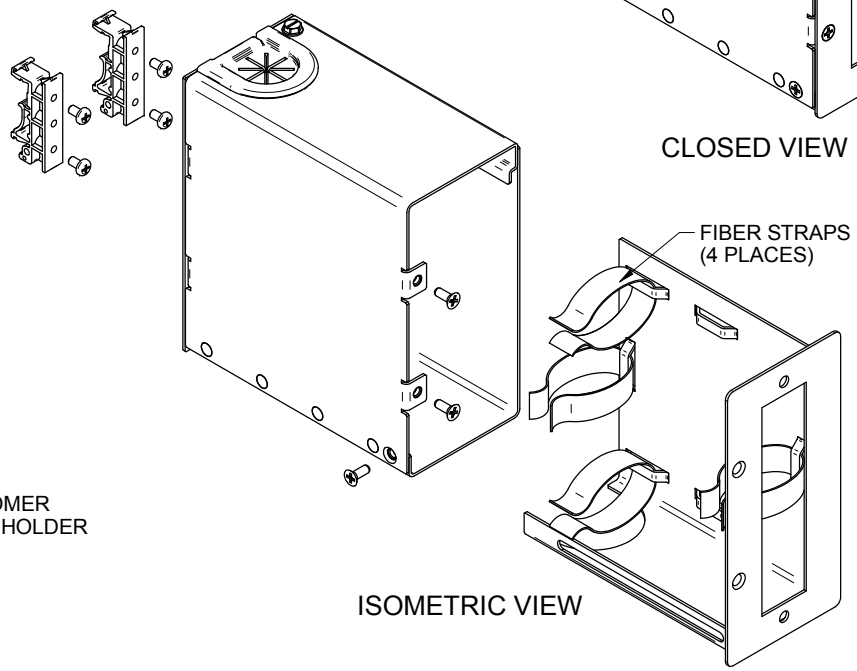
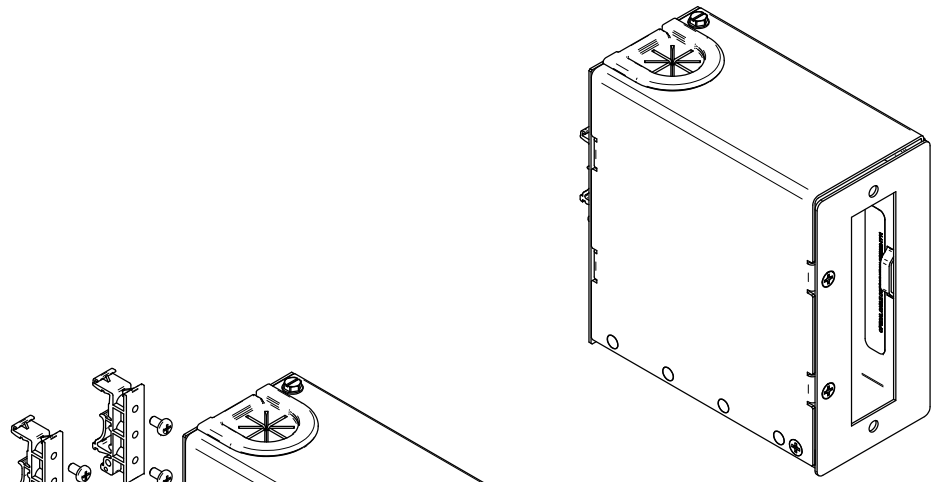
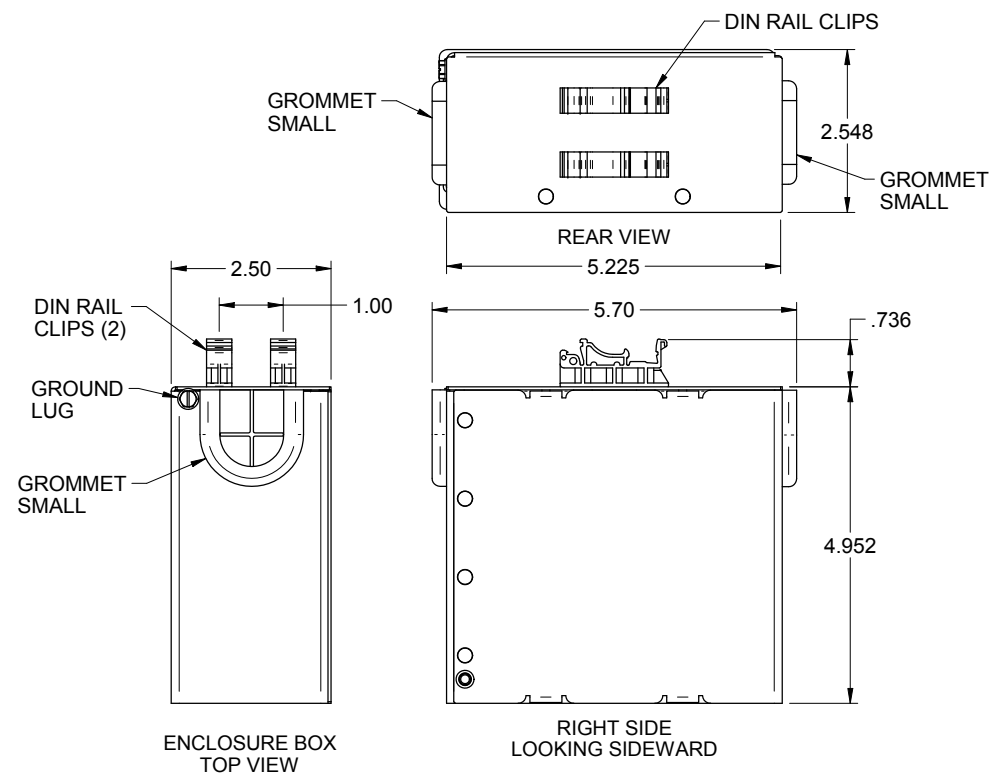


| REVISION HISTORY | | DATE | ECN | CHECKED |
|------------------|-----------------|---------|-----|---------|
| REV/SHT | DESCRIPTION | | | |
| A | ALL RELEASE NEW | 5/15/12 | NEW | JY |

"OPTICAL CABLE CORPORATION (OCC) RESERVES THE RIGHT TO REVISE ANY AND ALL DESIGN SPECIFICATIONS."

E
D
C
B



REAL OPTIC

UNCONTROLLED COPY

| | | | |
|---|--|---|---------------------------------|
| DTC1AP | CABINET, DIN RAIL, 1 ADAPTER PLATE, BLACK | | |
| OCC PART NO. | DESCRIPTION | | |
| <small>UNLESS OTHERWISE SPECIFIED DIMENSIONS ARE IN INCHES. TOLERANCES: FRACTIONS ±1/32 ANGLES ±1/2° 3 PLACE DECIMALS ±.005" 2 PLACE DECIMALS ±.01"</small> | | <small>THIS DRAWING AND THE DESIGN SHOWN ARE THE PROPERTY OF OPTICAL CABLE CORPORATION AND MAY NOT BE USED AS THE BASIS FOR MANUFACTURE OR SALE WITHOUT SPECIFIC WRITTEN PERMISSION OF OPTICAL CABLE CORPORATION.</small> | |
| MATERIAL | FINISH | DRAWN | DATE |
| OVERALL BODY: CRS DIN RAILS: THERMOPLASTIC | OVER ALL BODY: BLACK POWDERCOAT PAINTED PER OCC SPEC# 100025 | D.A.HOLBERT | 5/15/12 |
| CHECKED | ENGINEER | APPROVED | DATE |
| S.PORACH | J.YANK | J.HOWE | 12/16/12 5/15/12 11/19/14 |
| PREVIOUS DWG | FILENAME | SCALE | SHEET |
| | C111201A.dft | 1:1.5 | 1 OF 1 |



| | | |
|---|----------------|-----|
| DWG TITLE | | REV |
| DIN RAIL, FIBER, ADAPTER PLATE RECEPTACLE, DTC1AP | | A |
| SIZE | DWG NO. | |
| C | C111201 | |

Importado y Distribuido por Real Optic Limitada

Avenida Ventisquero #1204 Modulo 18 - Renca, Chile - ventas@realoptic.com - www.realoptic.com -WP:+56996374501