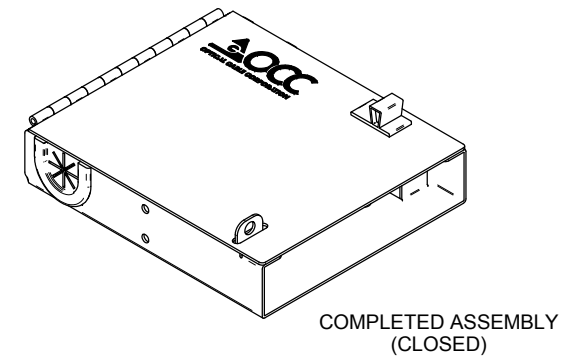
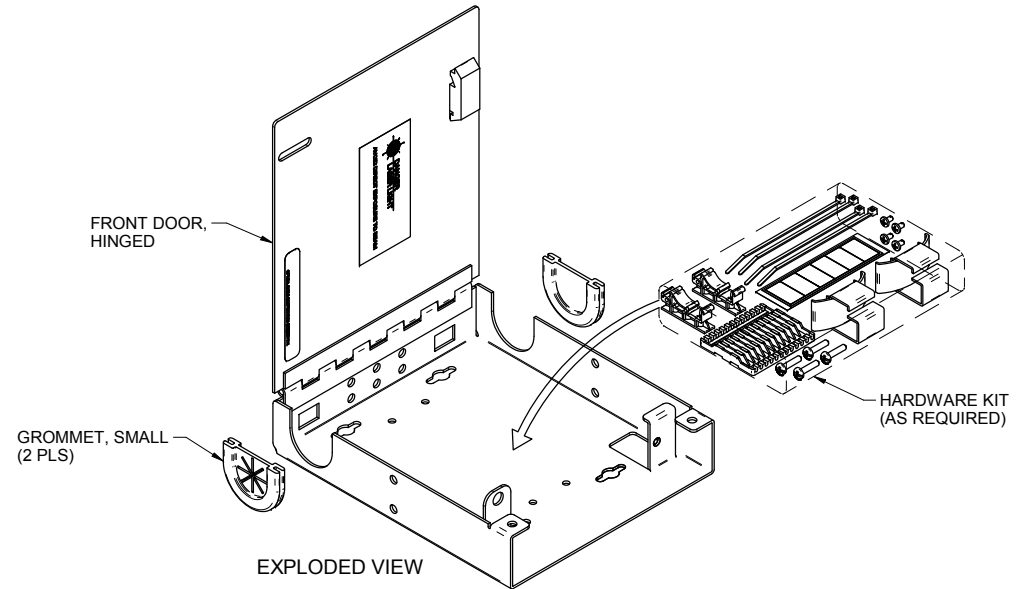
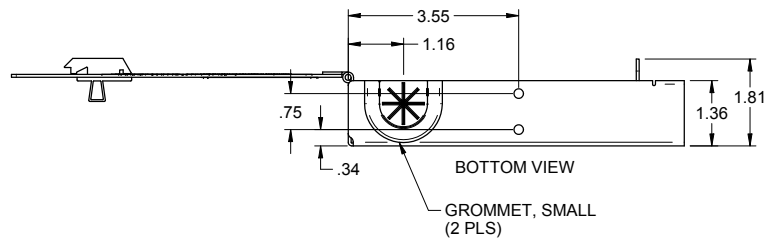
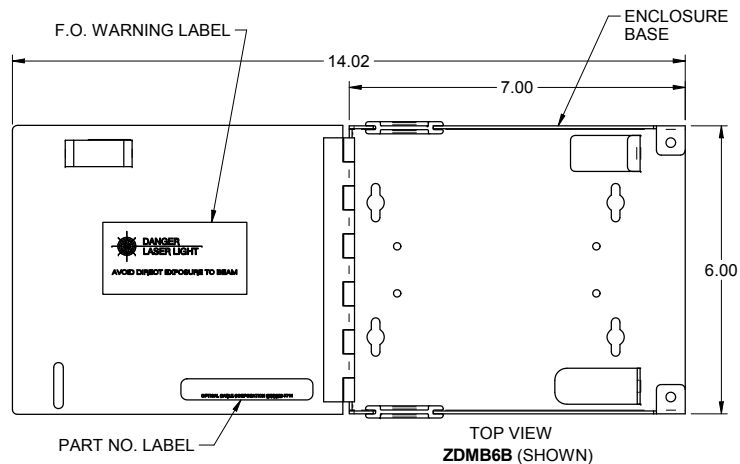
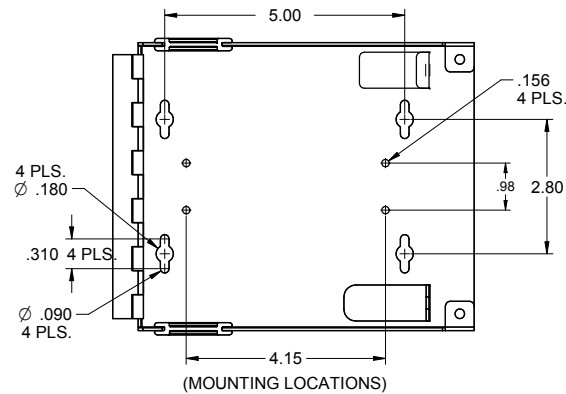


ZDMB6 ENCLOSURE ASSEMBLY UNLOADED (STANDARD)

"OPTICAL CABLE CORPORATION (OCC)
RESERVES THE RIGHT TO REVISE ANY
AND ALL DESIGN SPECIFICATIONS."
UNCONTROLLED COPY

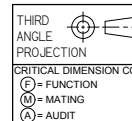


NOTES: UNLESS OTHERWISE SPECIFIED.

- ENCLOSURE COLOR AVAILABLE: "B"=BLACK.
- INSTRUCTION SHEET (1) AND HARDWARE KIT (1) ARE INCLUDED IN ENCLOSURE IN AN INDIVIDUAL PACKAGE.
- CABLE HOLDERS AND OTHER PLASTIC MATERIAL PARTS MEET UL 94 V-0 P.P.O.



REAL OPTIC



UNLESS OTHERWISE SPECIFIED DIMENSIONS ARE IN INCHES. TOLERANCES: FRACTIONS ±1/32" ANGLES ±1/2° 3 PLACE DECIMALS ±.005" 2 PLACE DECIMALS ±.01"		THIS DRAWING AND THE DESIGN SHOWN ARE THE PROPERTY OF OPTICAL CABLE CORPORATION AND MAY NOT BE USED AS THE BASIS FOR MANUFACTURE OR SALE WITHOUT SPECIFIC WRITTEN PERMISSION OF OPTICAL CABLE CORPORATION.	
MATERIAL SEE BILL OF MATERIAL	CHECKED R.B.SMITH	DATE 11/21/09	DRAWN D.A.HOLBERT
ENGINEER J.YANIK	DATE 4/19/09	DATE 11/21/09	DATE 4/19/09
APPROVED J.HOWE	DATE 11/21/09	DATE 4/19/09	DATE 4/19/09
PREVIOUS DWG	FILENAME C109583D.dft	SCALE NONE	SHEET 1 OF 1
NEXT DWG	SCALE NONE	SHEET 1 OF 1	REV D



**ZONE DISTRIBUTION BOX
(STANDARD)**

SIZE **C** DWG NO. **C109583** REV **D**

PROPRIETARY AND CONFIDENTIAL